

A project by



HAVENFORT  
PROPERTIES

# VISTA VERDE

A new wave of living



**BELONG**  
TO THE GOOD SIDE.

2 & 3 BHK Limited Edition Luxury Residences @ VIJAYAPAL COLONY, HANAMKONDA



# VISTA VERDE

A new wave of living



— STAY  
AHEAD  
IN LIFE. —

SURROUNDED BY VERDANT BEAUTY AND ENVELOPED BY RICH FLORA, VISTA VERDE IS DESIGNED TO IMPRESS AND GIVE YOU A FEELING OF PRIDE AND PASSION FOR YOUR HOME. THE ELEVATION, DESIGN AND LUXURY IT HAS WILL OUTCLASS ANY OTHER COMMUNITY IN THE VICINITY. COME MOVE IN TO A HOME HERE AND STAY AHEAD IN LIFE.





3D VIEW

3 BHK  
EAST-FACING  
FLAT NO. 3

1486 SFT.

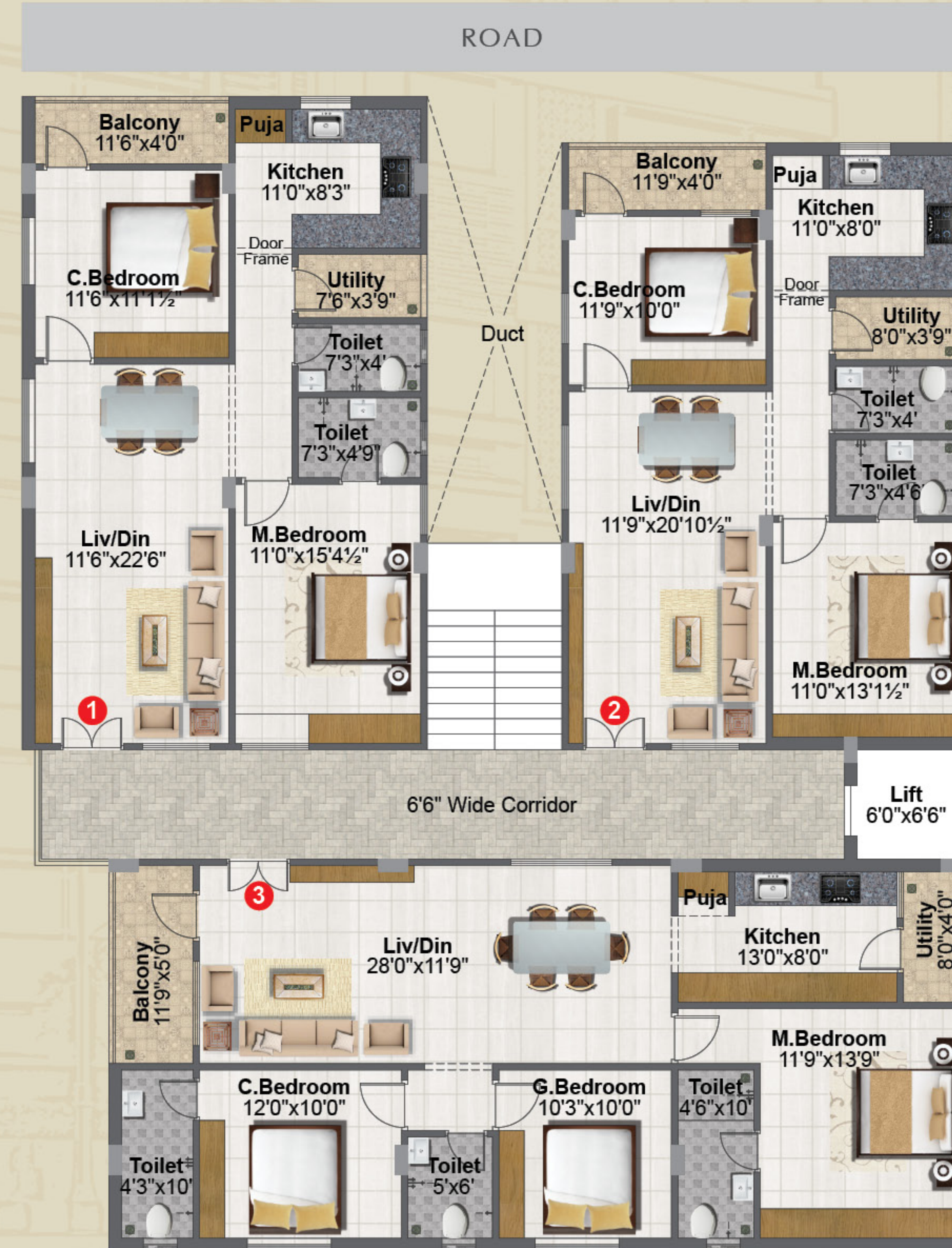
# VISTA VERDE

A new wave of living

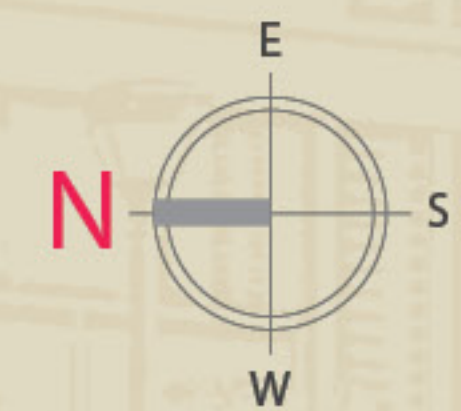


LET DELIGHTS POUR IN.

An abode of limited number of flats on each floor, Vista Verde has two 2BHK and one 3BHK units with plenty of ventilation and natural light pouring in. With homes that span across 1091 sft, 1164 sft and 1486 sft, life is yours to be spent in delight and amidst luxury.



TYPICAL FLOOR PLAN



Area Statement

Flat No.	1	2	3
Type	2 BHK	2 BHK	3 BHK
Facing	West	West	East
Areas	1164	1091	1486



3D VIEW

2 BHK  
WEST-FACING  
FLAT NO. 2

1091 SFT.



## BEAUTIFUL INSIDE - OUT.

Vista Verde is loaded with a plethora of features and highlights that make it a community to be in and an investment to buy. Right from the design of the elevation to the way the flats have been planned to features of no common walls, there's much to be pleased about here.

1164 SFT.

3D VIEW

2 BHK  
WEST-FACING  
FLAT NO. 1



# VISTA VERDE

A new wave of living



QUALITY  
CONSTRUCTION



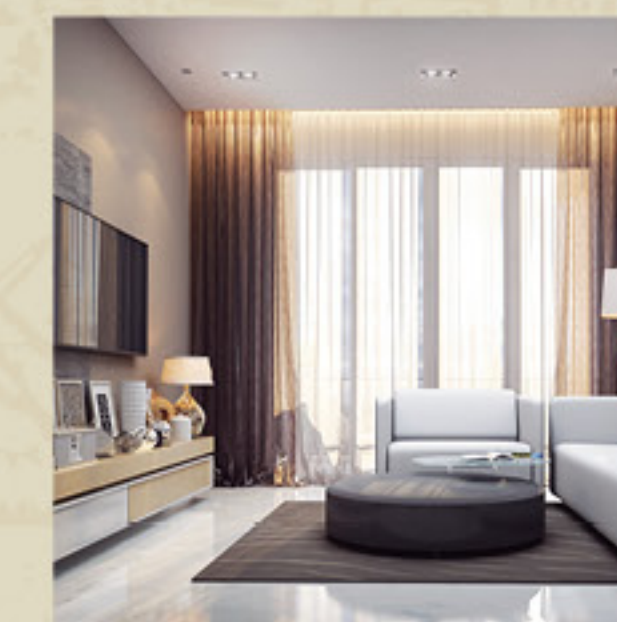
RAIN WATER  
HARVESTING PITS



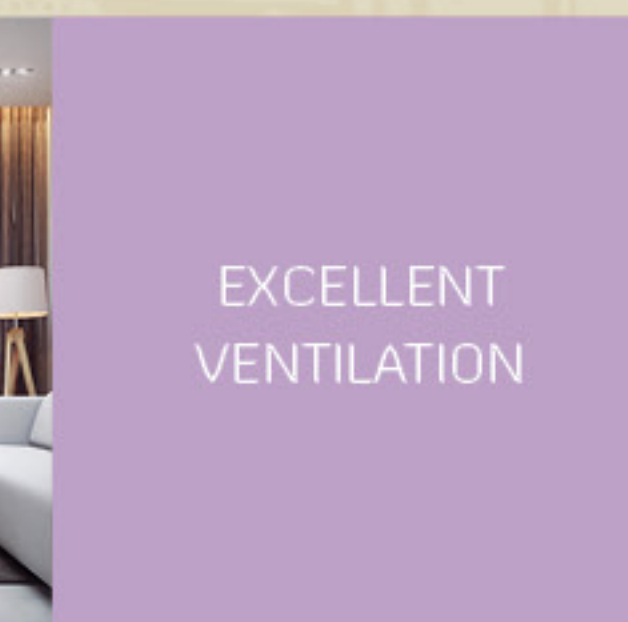
NO COMMON  
WALLS



ROOF-TOP  
GARDEN



EXCELLENT  
VENTILATION



POWER BACK-UP  
GENERATOR





When you use the best, what you create is the finest. It's not a statement of preaching but something that's time-tested and proven. To give you the best, we use material, fixtures and fittings of top-quality only.



## SPECIFICATIONS

CREATED  
WITH THE FINEST.

 <p><b>STRUCTURE</b> RCC-framed structure.</p>	 <p><b>PLUMBING</b> Separate plumbing line for waste/ storm water efficiently managed to recharge the ground water.</p>	 <p><b>PARKING</b> Aesthetically-designed parking.</p>
 <p><b>WINDOWS</b> UPVC windows with MS safety grills.</p>	 <p><b>LIFT</b> Six-passenger lift with granite/tiles dadoing around ground floor entrance.</p>	 <p><b>SECURITY SYSTEM</b> CC camera system will be installed across premises.</p>
 <p><b>DOORS</b> Main Door: Teakwood frame and shutter aesthetically designed with veneer. Polishing and designer hardware of reputed make. Internal Doors: Teakwood frame with both sides moulded flush doors.</p>	 <p><b>TOILETS</b> Hot and cold mixer with shower. Provision for geysers in all bathrooms. C.P. fittings and sanitaryware of Jaquar or equivalent make. Designer concept tiles of reputed make, up to door height.</p>	 <p><b>ELECTRICAL</b> Concealed copper wiring of standard-make with adequate light, fan, power plugs and points with standard make modular switches.</p>
		
 <p><b>FLOORING</b> Bedrooms, drawing, living, dining and kitchen: Vitrified tiles. Lobby/Stairs: Granite flooring. Balance/Utility: Anti-skid tiles.</p>	 <p><b>KITCHEN</b> Granite platform with stainless steel sink. Glazed ceramic tiles dado up to 2' height above kitchen platform.</p>	 <p><b>OTHER HIGHLIGHTS</b> Roof-top garden and play area.</p>
 <p><b>PAINTING</b> Internal: Smooth putty finish with emulsion paint. External: Combination of textured / smooth-finish based on design.</p>	 <p><b>POWER BACK-UP</b> Generator for lights in common areas and pumps. Power back-up for 3 light / fan points in each flat.</p>	 <p><b>NOTE</b> Registration Charges, GST and any other taxes applicable as per government norms to be borne by customers only.</p>





— KEEP —  
**YOURSELF**  
 CLOSE TO EASE.

We know how much the location of your home matters to you, which is why we have set Vista Verde in one of the most connected areas of Hanamkonda. It is located in the vicinity of things that matter to you, like schools, colleges, supermarkets, parks and much more.





— MADE BY —  
**THOSE WHO ARE**  
KNOWN.

**Vista Verde** is from the house of Havenfort Developers and Builders, the group that has properties in Hyderabad and Hanamkonda. They have loads of experience and expertise in the field of construction and real estate, and that means you are with the most trusted.

Builders & Developers



**HAVENFORT PROPERTIES**

**Office:** Plot No. 9, 204 Anuradha Complex,  
Kompally, Hyderabad – 500104, Telangana.

**Site:** Road No. 1B, Vijayapal Colony,  
Waddepally, Hanamkonda – 506001

**Cell: 90 7400 1234, 83 6767 4444**

**Web: [www.havenfort.in](http://www.havenfort.in)**

DESIGN STUDIO BY

**DHEERAJ DASYAM**

• ARCHITECTURE • PLANNING • INTERIORS •

#2-7-1322, Road No. 1B, Vijayapal Colony, Hanamkonda, Warangal,  
Telangana State. Pin : 506001. Contact no: +91 8297135666

NOTE : This brochure is only a conceptual presentation of the project and not a legal offering.  
The promoters reserve the right to make changes in the elevation, plans and specifications as deemed fit.