

A project by



ENCHANTING
LIVING FOR THE
CHOSEN FEW.



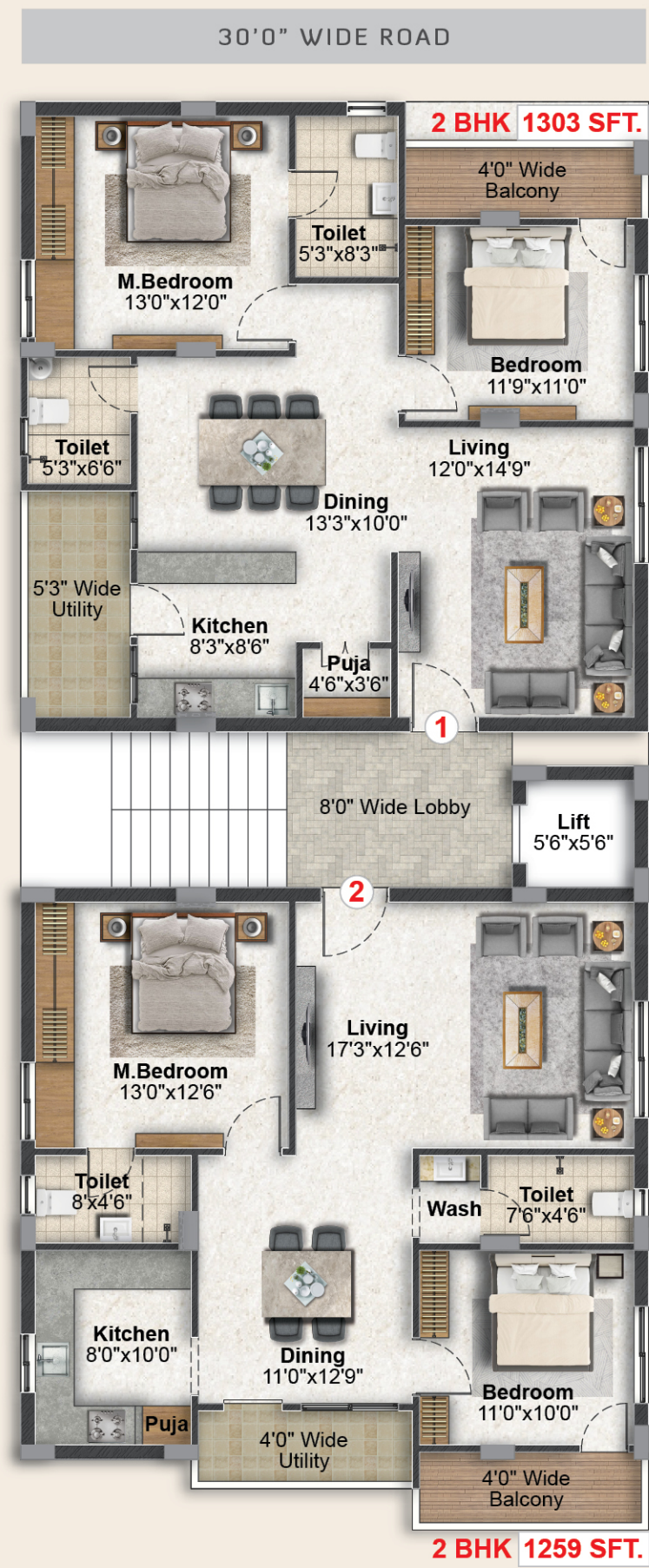
GSR PRIME

LIFE IS NICE HERE

2 BHK

LUXURIOUS APARTMENTS @
EXCISE COLONY, HANAMKONDA





TYPICAL FLOOR PLAN

Area Statement

Flat No.	1	2
Type	2 BHK	2 BHK
Facing	East	West
Saleable Area (SFT)	1303	1259



AMENITIES & FEATURES

- QUALITY CONSTRUCTION
- RAIN-WATER HARVESTING PIT'S
- NO COMMON WALLS
- EXCELLENT VENTILATION
- CCTV SURVEILLANCE
- POWER BACK-UP GENERATOR



STRUCTURE

RCC-framed structure.

WINDOWS

UPVC windows with MS safety grills.

DOORS

Main Door: Teakwood frame and shutter aesthetically designed with veneer. Polishing and designer hardware of reputed make.

Internal Doors: Teakwood frame with both sides moulded flush doors.

FLOORING

Bedrooms, drawing, living, dining and kitchen: Vitrified tiles.

Lobby / Stairs: Granite flooring.

Balcony / Utility: Anti-skid tiles.

PAINTING

Internal: Smooth putty finish with emulsion paint.

External: Combination of textured / smooth-finish based on design.

TOILETS

Hot and cold mixer with shower. Provision for geysers in all bathrooms. C.P. fittings and sanitaryware of Reputed make. Designer concept tiles of reputed make, up to door height.

External: Sperate plumbing line for waste / storm water efficiently managed to recharge the ground water.

SPECIFICATIONS



KITCHEN

Granite platform with stainless steel sink with borewell water and provision for drinking water. Glazed ceramic tiles dado up to 2' height above kitchen platform.

POWER BACK-UP

Generator for lights in common areas and pumps. Power back-up for five light / fan points in each flat.

PARKING

Aesthetically-designed parking.

ELECTRICAL

Concealed copper wiring of standard-make with adequate light, fan, power plugs and points with standard make modular switches.

LIFT

Six-passenger lift with granite / tiles dadoing around ground floor entrance.

SECURITY SYSTEM

CC camera system will be installed across premises.

NOTE

Registration Charges, GST and any other taxes applicable as per government norms to be borne by customers only.

PREVIOUS PROJECTS



VISTA VERDE @ Vijaypal Colony



PEBBLES @ Parimala Colony



VISTA GRANDE @ Vijaypal Colony



TULIP @ Prakashreddypet



Office: Plot No. 9,
204 Anuradha Complex,
Kompally, Hyderabad-500014

Warangal Office: #202,
Vista Grande by Havenfort,
Vijaypal Colony,
Hanamkonda-506370

Contact:
9074 00 1234, 8008 64 8684

Email : info@havenfort.in

Website : Havenfort.in

Note: This brochure is only a conceptual presentation of the project and not a legal offering.
The promoters reserve the right to make changes in plans, specifications and elevation as deemed fit.

Artifice +91 98852 53570